

Moulded case current transformer for billing purposes class 0.5 ... / 5 A

Increased safety

- Both halves of the housing overlap rather than butting up against one another
- Burst-resistant plastic housing made from polyamide
- Non-combustible per UL 94 VO and self-extinguishing

Protective caps for primary rail fastening screws

- Screw-in pins for the primary rail terminals can be insulated by means of protective caps, available as an option
- Safeguard to prevent accidental contact

Secondary connection feed

- Feeding of the secondary connection to the connection terminals through the rectangular opening in the front and rear sides
- During installation, e.g. behind the safety strip, the secondary connection is implemented by means of cable lugs through the side slots

Expanded secondary terminal covering

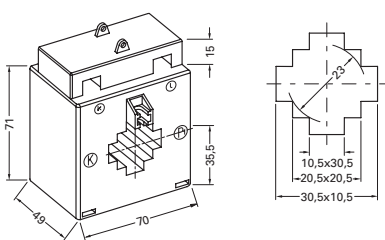
- In addition to the normal terminal covering, extra protective hoods are available
- Locking of the front and rear feed to the secondary terminals



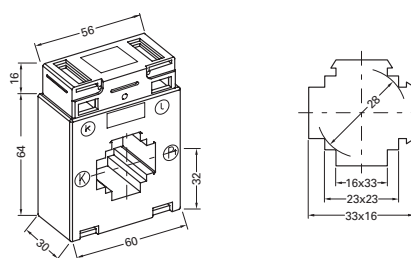
Dimension diagrams

All dimensions in mm

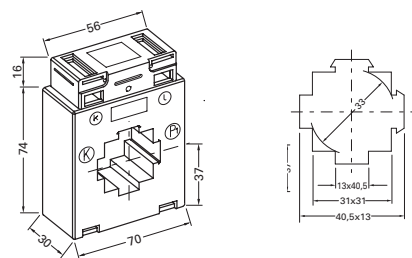
EIPA30.5



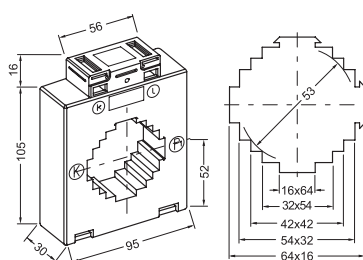
E6A315.3



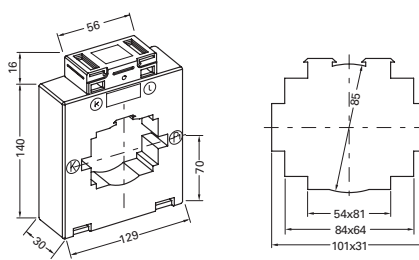
E7A412.3



E9A615.3



E13A1030.3



General mechanical properties

- Nominal frequency 50 – 60 Hz
- Insulation class E (other classes on request)
- Thermal rated short-term current $I_{th} = 60 \times I_N/1s$
- Rated surge current $I_{dyn} = 2.5 \times I_{th}$, however min. 100 kA with all plug-in current transformers
- Highest voltage for operating equipment $U_m = 0.72 \text{ kV}$
- Rated insulation level (test voltage) 4 kV / 1 min (per EN 61869-2)
- Over-current limit factor FS5 or FS10
- Harmonics current up to 50th harmonic



Technical Data

Device overview, calibratable plug-in current transformer, class 0.5 ... / 5 A Secondary current*							
Type	Primary current in A	Power in VA	Primary conductor (bus bars)	Round conductor in mm	Width in mm	Weight (kg)	Item no.
EIPA30.5	50	1.25	30.5 x 10.5; 20.5 x 20.5; 10.5 x 30.5	23	70	0.4	09.14.810
EIPA30.5	75	2.5	30.5 x 10.5; 20.5 x 20.5; 10.5 x 30.5	23	70	0.4	09.14.812
EIPA30.5	100	2.5	30.5 x 10.5; 20.5 x 20.5; 10.5 x 30.5	23	70	0.3	09.14.811
E6A315.3	200	2.5	33 x 16; 23 x 23, 16 x 33	28	60	0.3	09.10.340
E6A315.3	250	5	33 x 16; 23 x 23, 16 x 33	28	60	0.3	09.10.367
E6A315.3	300	5	33 x 16; 23 x 23, 16 x 33	28	60	0.3	09.10.366
E6A315.3	400	5	33 x 16; 23 x 23, 16 x 33	28	60	0.3	15.02.907
E6A315.3	500	5	33 x 16; 23 x 23, 16 x 33	28	60	0.3	09.10.364
E6A315.3	600	5	33 x 16; 23 x 23, 16 x 33	28	60	0.3	09.11.365
E7A412.3	800	5	40.5 x 13; 31 x 31, 13 x 40.5	33	70	0.3	09.10.390
E7A412.3	1.000	5	40.5 x 13; 31 x 31, 13 x 40.5	33	70	0.4	09.10.888
E9A615.3	1.500	5	64 x 16; 54 x 32; 42 x 42; 32 x 54; 16 x 64	53	95	0.4	09.10.387
E13A1030.3	1.600	5	101 x 31; 84 x 64; 54 x 81	85	129	0.5	09.12.887
E13A1030.3	2.000	5	101 x 31; 84 x 64; 54 x 81	85	129	0.5	09.12.888
E13A1030.3	2.500	5	101 x 31; 84 x 64; 54 x 81	85	129	0.5	09.12.889

Description	Item no.
Conformity declaration with corrigendum	09.50.011

*These transformers are not on stock and will be ordered to customer order, products are excluded from return.
Transformers with other primary or secondary currents on request.

Basic Information for the use of current transformer can be found in chapter 10.